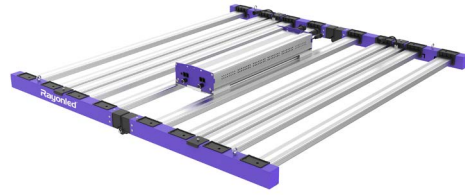


GLMF-760W-PRO

HIGH PERFORMANCE MEDICAL LIGHT PAR+



PROJECT :

NOTE :

COMPANY NAME:

TYPE:

DATE:

CATALOG NUMBER:

ITEM CODE

WATT

CCT

CONTROL

VOLTAGE

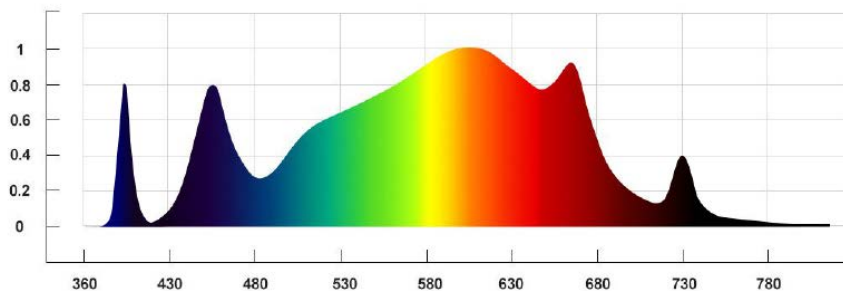
OPTION

SPECIFICATION

Light Source	LED
IP	IP65
Chips	SAMSUNG LM301B
Wattage	760W (8 full spectrum bars + 2 UVFR bars)
Efficacy	2.9 $\mu\text{mol}/\text{J}$
PPF	2,204 μmol
Digital controller	RJ14 port
Relative Humidity	23%RH-90%RH
Life-span	L85-50,000Hrs
CRI	80Ra
Dimmability	2 rotating devices
Finish	Silver / Blue
Work Temperature	-25°C~+50°C
Certification	ETLc
Total chips (pcs)	4080
Warranty	5 years

ITEM CODE

Item	Description
GLMF-760W-PRO-120	Medical Plant Light 10 strips, 720W, 3500K add 660nm,120V, RJ14 adaptor, 2.9 $\mu\text{mol}/\text{J}$



FEATURES

CONSTRUCTION

- Light engines are made of extruded aluminum for better cooling
- Easily removable driver and light bars for maintenance capability
- Driver housing made of aluminium extrusion and can be installed remotely
- Multi-bar assembly unit, easy assembly and installation
- Driver compartment isolated from light engine for better cooling
- Ingress protection IP65
- Samsung LED chips LM301B
- Ambient temperature -20°C ~ +50°C

MOUNTING

- Suspension with stainless V hook for luminaire and driver box

CONTROL

- Standard manual dimming options on the driver box with 2 rotating devices for controlling separately full spectrum bar (8) and UV-FR bar (2)
- Optional digital controller with RJ14 cable connect to device

ELECTRICAL

- 120/277Vac 60Hz standard, 347V optional

COMPLIANCE

- ETLc
- ROHS
- CSA C22.2#250.0:2018 Ed.4

